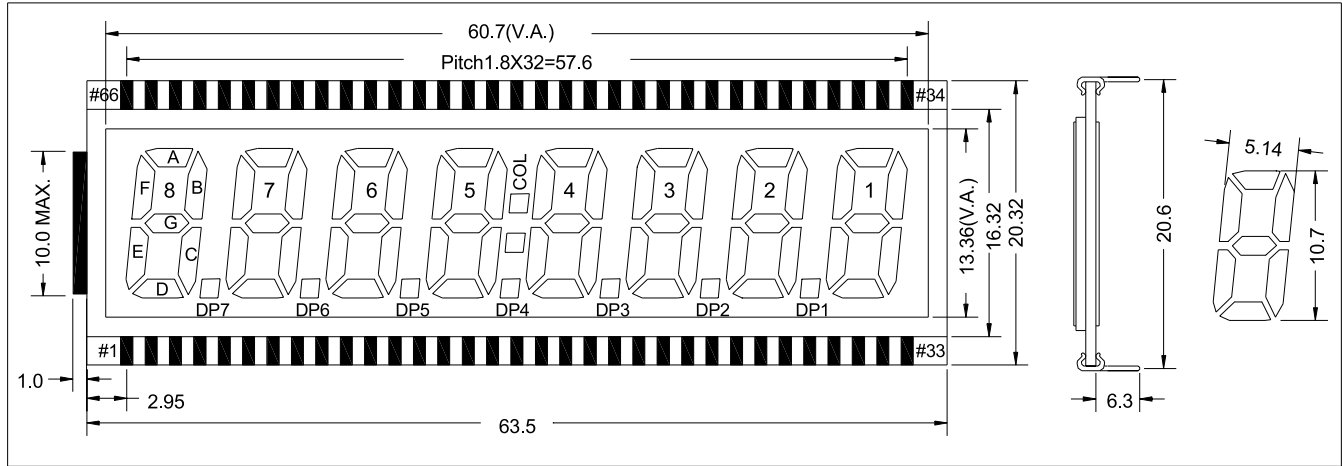


① EXTERNAL DIMENSION



② LOGIC

PIN#	1	2	3	4	5	6	7	8	9	10	11	12	13	14
SYM.	COM	E8	D8	C8	DP8	E7	D7	C7	DP7	E6	D6	C6	DP6	E5
PIN#	15	16	17	18	19	20	21	22	23	24	25	26	27	28
SYM.	D5	C5	DP5	E4	D4	C4	DP4	E3	D3	C3	DP3	E2	D2	C2
PIN#	29	30	31	32	33	34	35	36	37	38	39	40	41	42
SYM.	DP2	E1	D1	C1	B1	A1	F1	G1	B2	A2	F2	G2	B3	A3
PIN#	43	44	45	46	47	48	49	50	51	52	53	54	55	56
SYM.	F3	G3	B4	A4	F4	G4	COL	B5	A5	F5	G5	B6	A6	F6
PIN#	57	58	59	60	61	62	63	64	65	66				
SYM.	G6	B7	A7	F7	G7	B8	A8	F8	G8	COM				

AN 800-1070 X X X
1 2 3 4 5

1 NUMERIC DISPLAY

2 PART NUMBER

3 POLARIZER MODE - R = REFLECTIVE
 - T = TRANSMISSIVE
 - F = TRANSFLECTIVE

4 TEMPERATURE

- S = STANDARD TEMPERATURE
 - H = HIGH TEMPERATURE

5 POLARIZER COLOR

- N = NEUTRAL
 - R=RED
 - B=BLUE
 - G=GOLD