

EXAMINED BY : <i>Bob Hu</i>	EMERGING DISPLAY TECHNOLOGIES CORPORATION	FILE NO . CAS-10000
APPROVED BY: <i>MS Huang</i>		ISSUE : FEB.13,2003
		TOTAL PAGE : 8
		VERSION : 5

CUSTOMER ACCEPTANCE SPECIFICATIONS

MODEL NO. :

162B0(LED TYPES)

FOR MESSRS :

CUSTOMER'S APPROVAL

DATE :

BY :

EMERGING DISPLAY
TECHNOLOGIES CORPORATION

MODEL NO.
162B0(LED TYPES)

VERSION
5

RECORDS OF REVISION

DOC . FIRST ISSUE

SEP.16,1997

DATE	REVISED PAGE NO.	SUMMARY																																																																													
DEC.02,1997	1~5 , 8	THE ENTIRE PAGES REVISED																																																																													
AUG.27,1999	ALL	THE ENTIRE PAGES REVISED																																																																													
NOV.18,1999	3	ADD RECOMMENDED LCD DRIVING VOLTAGE																																																																													
	8	10.1POWER SUPPLY FOR LCD MODULE REVISE FIGURE																																																																													
FEB.13,2003	—	NUMBERING SYSTEM ADD BACKLIGHT COLOR : RED , CODE VALUE : R																																																																													
	2	3.1 ELECTRICAL ABSOLUTE MAXIMUM RATINGS . (AT Ta = 25°C) <table border="1" style="width: 100%; border-collapse: collapse;"> <thead> <tr> <th>PARAMETER</th> <th>SYMBOL</th> <th>MIN .</th> <th>MAX .</th> <th>UNIT</th> <th>REMARK</th> </tr> </thead> <tbody> <tr> <td>LED POWER DISSIPATION</td> <td>PD</td> <td>—</td> <td>1.3</td> <td>W</td> <td rowspan="3" style="text-align: center;">→</td> </tr> <tr> <td>LED FORWARD CURRENT</td> <td>IF</td> <td>—</td> <td>260</td> <td>mA</td> </tr> <tr> <td>LED REVERSE VOLTAGE</td> <td>VR</td> <td>—</td> <td>8</td> <td>V</td> </tr> </tbody> </table> <table border="1" style="width: 100%; border-collapse: collapse;"> <thead> <tr> <th>PARAMETER</th> <th>SYMBOL</th> <th>MIN .</th> <th>MAX .</th> <th>UNIT</th> <th>REMARK</th> </tr> </thead> <tbody> <tr> <td>LED POWER DISSIPATION (YELLOW-GREEN LED)</td> <td>PD</td> <td>—</td> <td>1.3</td> <td>W</td> <td></td> </tr> <tr> <td>LED FORWARD CURRENT (YELLOW-GREEN LED)</td> <td>IF</td> <td>—</td> <td>260</td> <td>mA</td> <td></td> </tr> <tr> <td>LED REVERSE VOLTAGE (YELLOW-GREEN LED)</td> <td>VR</td> <td>—</td> <td>8</td> <td>V</td> <td></td> </tr> <tr> <td>LED POWER DISSIPATION (RED LED)</td> <td>PD</td> <td>—</td> <td>0.94</td> <td>W</td> <td></td> </tr> <tr> <td>LED FORWARD CURRENT (RED LED)</td> <td>IF</td> <td>—</td> <td>208</td> <td>mA</td> <td></td> </tr> <tr> <td>LED REVERSE VOLTAGE (RED LED)</td> <td>VR</td> <td>—</td> <td>8</td> <td>V</td> <td></td> </tr> </tbody> </table>	PARAMETER	SYMBOL	MIN .	MAX .	UNIT	REMARK	LED POWER DISSIPATION	PD	—	1.3	W	→	LED FORWARD CURRENT	IF	—	260	mA	LED REVERSE VOLTAGE	VR	—	8	V	PARAMETER	SYMBOL	MIN .	MAX .	UNIT	REMARK	LED POWER DISSIPATION (YELLOW-GREEN LED)	PD	—	1.3	W		LED FORWARD CURRENT (YELLOW-GREEN LED)	IF	—	260	mA		LED REVERSE VOLTAGE (YELLOW-GREEN LED)	VR	—	8	V		LED POWER DISSIPATION (RED LED)	PD	—	0.94	W		LED FORWARD CURRENT (RED LED)	IF	—	208	mA		LED REVERSE VOLTAGE (RED LED)	VR	—	8	V														
PARAMETER	SYMBOL	MIN .	MAX .	UNIT	REMARK																																																																										
LED POWER DISSIPATION	PD	—	1.3	W	→																																																																										
LED FORWARD CURRENT	IF	—	260	mA																																																																											
LED REVERSE VOLTAGE	VR	—	8	V																																																																											
PARAMETER	SYMBOL	MIN .	MAX .	UNIT	REMARK																																																																										
LED POWER DISSIPATION (YELLOW-GREEN LED)	PD	—	1.3	W																																																																											
LED FORWARD CURRENT (YELLOW-GREEN LED)	IF	—	260	mA																																																																											
LED REVERSE VOLTAGE (YELLOW-GREEN LED)	VR	—	8	V																																																																											
LED POWER DISSIPATION (RED LED)	PD	—	0.94	W																																																																											
LED FORWARD CURRENT (RED LED)	IF	—	208	mA																																																																											
LED REVERSE VOLTAGE (RED LED)	VR	—	8	V																																																																											
FEB.13,2003	3	4. ELECTRICAL CHARACTERISTICS <table border="1" style="width: 100%; border-collapse: collapse;"> <thead> <tr> <th>PARAMETER</th> <th>SYMBOL</th> <th>CONDITION</th> <th>MIN .</th> <th>TYP .</th> <th>MAX .</th> <th>UNIT</th> </tr> </thead> <tbody> <tr> <td>LED FORWARD VOLTAGE</td> <td>VF</td> <td>IF = 130 mA</td> <td>—</td> <td>4.2</td> <td>4.6</td> <td>V</td> </tr> <tr> <td>LED FORWARD CURRENT</td> <td>IF</td> <td>—</td> <td>—</td> <td>130</td> <td>—</td> <td>mA</td> </tr> <tr> <td>LED REVERSE CURRENT</td> <td>IR</td> <td>VR = 8 V</td> <td>—</td> <td>—</td> <td>0.2</td> <td>mA</td> </tr> </tbody> </table> <table border="1" style="width: 100%; border-collapse: collapse;"> <thead> <tr> <th>PARAMETER</th> <th>SYMBOL</th> <th>CONDITION</th> <th>MIN .</th> <th>TYP .</th> <th>MAX .</th> <th>UNIT</th> </tr> </thead> <tbody> <tr> <td>LED FORWARD VOLTAGE FOR YELLOW-GREEN LED</td> <td>VF</td> <td>IF = 130 mA</td> <td>—</td> <td>4.2</td> <td>4.6</td> <td>V</td> </tr> <tr> <td>LED FORWARD CURRENT FOR YELLOW-GREEN LED</td> <td>IF</td> <td>—</td> <td>—</td> <td>130</td> <td>—</td> <td>mA</td> </tr> <tr> <td>LED REVERSE CURRENT FOR YELLOW-GREEN LED</td> <td>IR</td> <td>VR = 8 V</td> <td>—</td> <td>—</td> <td>0.2</td> <td>mA</td> </tr> <tr> <td>LED FORWARD VOLTAGE FOR RED LED</td> <td>VF</td> <td>IF = 130mA</td> <td>3.8</td> <td>4.2</td> <td>4.5</td> <td>V</td> </tr> <tr> <td>LED FORWARD CURRENT FOR RED LED</td> <td>IF</td> <td>—</td> <td>—</td> <td>130</td> <td>—</td> <td>mA</td> </tr> <tr> <td>LED REVERSE CURRENT FOR RED LED</td> <td>IR</td> <td>VR = 8V</td> <td>—</td> <td>—</td> <td>1.3</td> <td>mA</td> </tr> </tbody> </table>	PARAMETER	SYMBOL	CONDITION	MIN .	TYP .	MAX .	UNIT	LED FORWARD VOLTAGE	VF	IF = 130 mA	—	4.2	4.6	V	LED FORWARD CURRENT	IF	—	—	130	—	mA	LED REVERSE CURRENT	IR	VR = 8 V	—	—	0.2	mA	PARAMETER	SYMBOL	CONDITION	MIN .	TYP .	MAX .	UNIT	LED FORWARD VOLTAGE FOR YELLOW-GREEN LED	VF	IF = 130 mA	—	4.2	4.6	V	LED FORWARD CURRENT FOR YELLOW-GREEN LED	IF	—	—	130	—	mA	LED REVERSE CURRENT FOR YELLOW-GREEN LED	IR	VR = 8 V	—	—	0.2	mA	LED FORWARD VOLTAGE FOR RED LED	VF	IF = 130mA	3.8	4.2	4.5	V	LED FORWARD CURRENT FOR RED LED	IF	—	—	130	—	mA	LED REVERSE CURRENT FOR RED LED	IR	VR = 8V	—	—	1.3	mA
		PARAMETER	SYMBOL	CONDITION	MIN .	TYP .	MAX .	UNIT																																																																							
LED FORWARD VOLTAGE	VF	IF = 130 mA	—	4.2	4.6	V																																																																									
LED FORWARD CURRENT	IF	—	—	130	—	mA																																																																									
LED REVERSE CURRENT	IR	VR = 8 V	—	—	0.2	mA																																																																									
PARAMETER	SYMBOL	CONDITION	MIN .	TYP .	MAX .	UNIT																																																																									
LED FORWARD VOLTAGE FOR YELLOW-GREEN LED	VF	IF = 130 mA	—	4.2	4.6	V																																																																									
LED FORWARD CURRENT FOR YELLOW-GREEN LED	IF	—	—	130	—	mA																																																																									
LED REVERSE CURRENT FOR YELLOW-GREEN LED	IR	VR = 8 V	—	—	0.2	mA																																																																									
LED FORWARD VOLTAGE FOR RED LED	VF	IF = 130mA	3.8	4.2	4.5	V																																																																									
LED FORWARD CURRENT FOR RED LED	IF	—	—	130	—	mA																																																																									
LED REVERSE CURRENT FOR RED LED	IR	VR = 8V	—	—	1.3	mA																																																																									

DATE	REVISED PAGE NO.	SUMMARY																																																																								
FEB.13,2003	4	<p>5. OPTICAL CHARACTERISTICS</p> <table border="1"> <thead> <tr> <th>I T E M</th> <th>SYMBOL</th> <th>CONDITION</th> <th>MIN .</th> <th>TYP .</th> <th>MAX .</th> <th>UNIT</th> <th>NOTE</th> </tr> </thead> <tbody> <tr> <td rowspan="2">THE BRIGHTNESS OF BACK-LIGHT</td> <td rowspan="2">L</td> <td rowspan="2">IF = 130 mA</td> <td>—</td> <td>31</td> <td>—</td> <td rowspan="2">cd/m²</td> <td>1, 2</td> </tr> <tr> <td>—</td> <td>67</td> <td>—</td> <td>1, 3 →</td> </tr> <tr> <td>PEAK EMISSION WAVELENGTH</td> <td>λ P</td> <td>IF = 130 mA</td> <td>—</td> <td>572</td> <td>—</td> <td>nm</td> <td>1</td> </tr> </tbody> </table> <table border="1"> <thead> <tr> <th>I T E M</th> <th>SYMBOL</th> <th>CONDITION</th> <th>MIN .</th> <th>TYP .</th> <th>MAX .</th> <th>UNIT</th> <th>NOTE</th> </tr> </thead> <tbody> <tr> <td rowspan="2">THE BRIGHTNESS OF BACK-LIGHT (YELLOW-GREEN)</td> <td rowspan="2">L</td> <td rowspan="2">IF = 130 mA</td> <td>—</td> <td>31</td> <td>—</td> <td rowspan="2">cd/m²</td> <td>1, 2</td> </tr> <tr> <td>—</td> <td>67</td> <td>—</td> <td>1, 3</td> </tr> <tr> <td>PEAK EMISSION WAVELENGTH (YELLOW-GREEN)</td> <td>λ P</td> <td>IF = 130 mA</td> <td>—</td> <td>572</td> <td>—</td> <td>nm</td> <td>1</td> </tr> <tr> <td>THE BRIGHTNESS OF BACK-LIGHT (RED)</td> <td>L</td> <td>IF = 130 mA</td> <td>—</td> <td>36.0</td> <td>—</td> <td>cd/m²</td> <td>1, 2</td> </tr> <tr> <td>PEAK EMISSION WAVELENGTH (RED)</td> <td>λ P</td> <td>IF = 130 mA</td> <td>—</td> <td>642</td> <td>—</td> <td>nm</td> <td>1</td> </tr> </tbody> </table>	I T E M	SYMBOL	CONDITION	MIN .	TYP .	MAX .	UNIT	NOTE	THE BRIGHTNESS OF BACK-LIGHT	L	IF = 130 mA	—	31	—	cd/m ²	1, 2	—	67	—	1, 3 →	PEAK EMISSION WAVELENGTH	λ P	IF = 130 mA	—	572	—	nm	1	I T E M	SYMBOL	CONDITION	MIN .	TYP .	MAX .	UNIT	NOTE	THE BRIGHTNESS OF BACK-LIGHT (YELLOW-GREEN)	L	IF = 130 mA	—	31	—	cd/m ²	1, 2	—	67	—	1, 3	PEAK EMISSION WAVELENGTH (YELLOW-GREEN)	λ P	IF = 130 mA	—	572	—	nm	1	THE BRIGHTNESS OF BACK-LIGHT (RED)	L	IF = 130 mA	—	36.0	—	cd/m ²	1, 2	PEAK EMISSION WAVELENGTH (RED)	λ P	IF = 130 mA	—	642	—	nm	1
I T E M	SYMBOL	CONDITION	MIN .	TYP .	MAX .	UNIT	NOTE																																																																			
THE BRIGHTNESS OF BACK-LIGHT	L	IF = 130 mA	—	31	—	cd/m ²	1, 2																																																																			
			—	67	—		1, 3 →																																																																			
PEAK EMISSION WAVELENGTH	λ P	IF = 130 mA	—	572	—	nm	1																																																																			
I T E M	SYMBOL	CONDITION	MIN .	TYP .	MAX .	UNIT	NOTE																																																																			
THE BRIGHTNESS OF BACK-LIGHT (YELLOW-GREEN)	L	IF = 130 mA	—	31	—	cd/m ²	1, 2																																																																			
			—	67	—		1, 3																																																																			
PEAK EMISSION WAVELENGTH (YELLOW-GREEN)	λ P	IF = 130 mA	—	572	—	nm	1																																																																			
THE BRIGHTNESS OF BACK-LIGHT (RED)	L	IF = 130 mA	—	36.0	—	cd/m ²	1, 2																																																																			
PEAK EMISSION WAVELENGTH (RED)	λ P	IF = 130 mA	—	642	—	nm	1																																																																			

NUMBERING SYSTEM

Polarizer Mode	Backlight	Code value
Transflective	LED	L
Transmissive	LED	M

Backlight Color	Code Value
Yellow-Green	Y
RED	R

E	W	16	2	B0	G	L	Y
---	---	----	---	----	---	---	---

LCD type + LCD color	Code Value
STN + Yellow-Green	Y
STN + Gray	G
STN + Blue	B

TABLE OF CONTENTS

NO.	ITEM	PAGE
1.	GENERAL SPECIFICATIONS -----	1
2.	MECHANICAL SPECIFICATIONS -----	1
3.	ABSOLUTE MAXIMUM RATINGS -----	2
4.	ELECTRICAL CHARACTERISTICS -----	3
5.	OPTICAL CHARACTERISTICS -----	4
6.	OUTLINE DIMENSION -----	5
7.	DETAIL DRAWING OF DOT MATRIX -----	6
8.	BLOCK DIAGRAM -----	6
9.	INTERFACE SIGNALS -----	7
10.	POWER SUPPLY -----	8
11.	DISPLAY DATA RAM ADDRESS -----	8

1. GENERAL SPECIFICATIONS

1.1 GENERAL SPECIFICATIONS

PLEASE REFER TO :

CUSTOMER ACCEPTANCE STANDARD SPECIFICATIONS :

EU - 002A

1.2 APPLICATION NOTES FOR CONTROLLER / DRIVER :

PLEASE REFER TO :

CUSTOMER ACCEPTANCE STANDARD SPECIFICATIONS :

EU - KS0066

1.3 THIS INDIVIDUAL SPECIFICATIONS IS PRIOR TO GENERAL SPECIFICATIONS .

2. MECHANICAL SPECIFICATIONS

- (1) NUMBER OF CHARACTER ----- 16 CH * 2 LINES
- (2) MODULE SIZE ----- 84.0W * 44.0H * 14.0D (max.) mm
- (3) EFFECTIVE AREA ----- 63.5W * 15.8H mm
- (4) CHARACTER FONT ----- 5 * 7 DOTS + CURSOR
- (5) CHARACTER SIZE ----- 2.96W * 5.56H mm
- (6) CHARACTER PITCH ----- 3.55W * 5.94H mm
- (7) DOT SIZE ----- 0.56W * 0.66H mm
- (8) DOT PITCH ----- 0.60W * 0.70H mm
- (9) LCD TYPE *
- (10) DRIVING METHOD ----- 1 / 16 DUTY MULTIPLEX DRIVE
- (11) BACK-LIGHT *

* PLEASE REFER TO NUMBERING SYSTEM

3. ABSOLUTE MAXIMUM RATINGS

3.1 ELECTRICAL ABSOLUTE MAXIMUM RATINGS . (AT Ta = 25 °C)

PARAMETER	SYMBOL	MIN .	MAX .	UNIT	REMARK
POWER SUPPLY FOR LOGIC	VDD – VSS	0	7.0	V	
POWER SUPPLY FOR LCD DRIVE	VDD – VO	0	13.0	V	
INPUT VOLTAGE	VI	VSS	VDD	V	
STATIC ELECTRICITY	—	—	100	V	NOTE (1)
LED POWER DISSIPATION (YELLOW-GREEN LED)	PD	—	1.3	W	
LED FORWARD CURRENT (YELLOW-GREEN LED)	IF	—	260	mA	
LED REVERSE VOLTAGE (YELLOW-GREEN LED)	VR	—	8	V	
LED POWER DISSIPATION (RED LED)	PD	—	0.94	W	
LED FORWARD CURRENT (RED LED)	IF	—	208	mA	
LED REVERSE VOLTAGE (RED LED)	VR	—	8	V	

NOTE (1) : TEST METHOD AND CONDITIONS :
AFTER CHARGING UP 200 PF CAPACITOR BY STATED VOLTAGE ,
THE CAPACITOR IS CONNECTED WITH INTERFACE PINS OF THE
MODULE .

3.2 ENVIRONMENTAL ABSOLUTE MAXIMUM RATINGS .

I T E M	OPERATING		STORAGE		REMARK
	MIN .	MAX .	MIN .	MAX .	
AMBIENT TEMPERATURE	- 20°C	70°C	- 30°C	80°C	NOTE (2), (3)
HUMIDITY	—	90 % RH	—	90 % RH	WITHOUT CONDENSATION
VIBRATION	—	4.9 m/s ² (0.5 G)	—	19.6 m/s ² (2 G)	
SHOCK	—	29.4 m/s ² (3 G)	—	490.0 m/s ² (50 G)	XYZ DIRECTIONS
CORROSIVE GAS	NOT ACCEPTABLE		NOT ACCEPTABLE		

NOTE (2) : Ta AT -30°C : 48HR MAX .
80°C : 168HR MAX .

NOTE (3) : BACKGROUND COLOR CHANGES SLIGHTLY DEPENDING ON AMBIENT
TEMPERATURE THIS PHENOMENON IS REVERSIBLE .

4. ELECTRICAL CHARACTERISTICS

Ta = 25°C

VDD = 5.0 ± 0.25 V

PARAMETER	SYMBOL	CONDITION	MIN.	TYP.	MAX.	UNIT
H LEVEL INPUT VOLTAGE	VIH	—	2.2	—	—	V
L LEVEL INPUT VOLTAGE	VIL	—	—	—	0.6	V
H LEVEL OUTPUT VOLTAGE	VOH	-IOH = 0.2 mA	2.4	—	—	V
L LEVEL OUTPUT VOLTAGE	VOL	IOL = 1.2 mA	—	—	0.4	V
POWER SUPPLY CURRENT (LOGIC)	IDD	VDD = 5.0 V	—	1.0	3.0	mA
RECOMMENDED LCD DRIVING VOLTAGE	VDD - VO ∅ = 10° θ = 0° DUTY = 1/16	Ta = -20 °C	—	5.0	—	V
		Ta = 25 °C	—	5.0	—	V
		Ta = 70 °C	—	5.0	—	V
CLOCK OSCILLATION FREQUENCY	FOSC	Ta = 25 °C	—	270	—	KHZ
LED FORWARD VOLTAGE FOR YELLOW-GREEN LED	VF	IF = 130 mA	—	4.2	4.6	V
LED FORWARD CURRENT FOR YELLOW-GREEN LED	IF	—	—	130	—	mA
LED REVERSE CURRENT FOR YELLOW-GREEN LED	IR	VR = 8 V	—	—	0.2	mA
LED FORWARD VOLTAGE FOR RED LED	VF	IF = 130mA	3.8	4.2	4.5	V
LED FORWARD CURRENT FOR RED LED	IF	—	—	130	—	mA
LED REVERSE CURRENT FOR RED LED	IR	VR = 8V	—	—	1.3	mA

5. OPTICAL CHARACTERISTICS .

Ta = 25 °C

VDD = 5.0 V

ITEM	SYMBOL	CONDITION	MIN .	TYP .	MAX .	UNIT	NOTE	
VIEWING AREA	∅ 2 - ∅ 1	K ≥ 1.4	3 0	—	—	deg.	1	
CONTRAST RATIO	K	∅ = 10° θ = 0°	5	—	—	—	1	
RESPONSE TIME	tr (rise)	∅ = 10° θ = 0°	Ta = -20°C	—	5538	—	ms	1
			Ta = 25°C	—	228	—		
			Ta = 70°C	—	104	—		
	tf (fall)		Ta = -20°C	—	2316	—		
			Ta = 25°C	—	174	—		
			Ta = 70°C	—	85	—		
THE BRIGHTNESS OF BACK-LIGHT (YELLOW-GREEN)	L	IF = 130 mA	—	31	—	cd/m ²	1, 2	
			—	67	—		1, 3	
PEAK EMISSION WAVELENGTH (YELLOW-GREEN)	λ P	IF = 130 mA	—	572	—	nm	1	
THE BRIGHTNESS OF BACK-LIGHT (RED)	L	IF = 130 mA	—	36.0	—	cd/m ²	1, 2	
PEAK EMISSION WAVELENGTH (RED)	λ P	IF = 130 mA	—	642	—	nm	1	

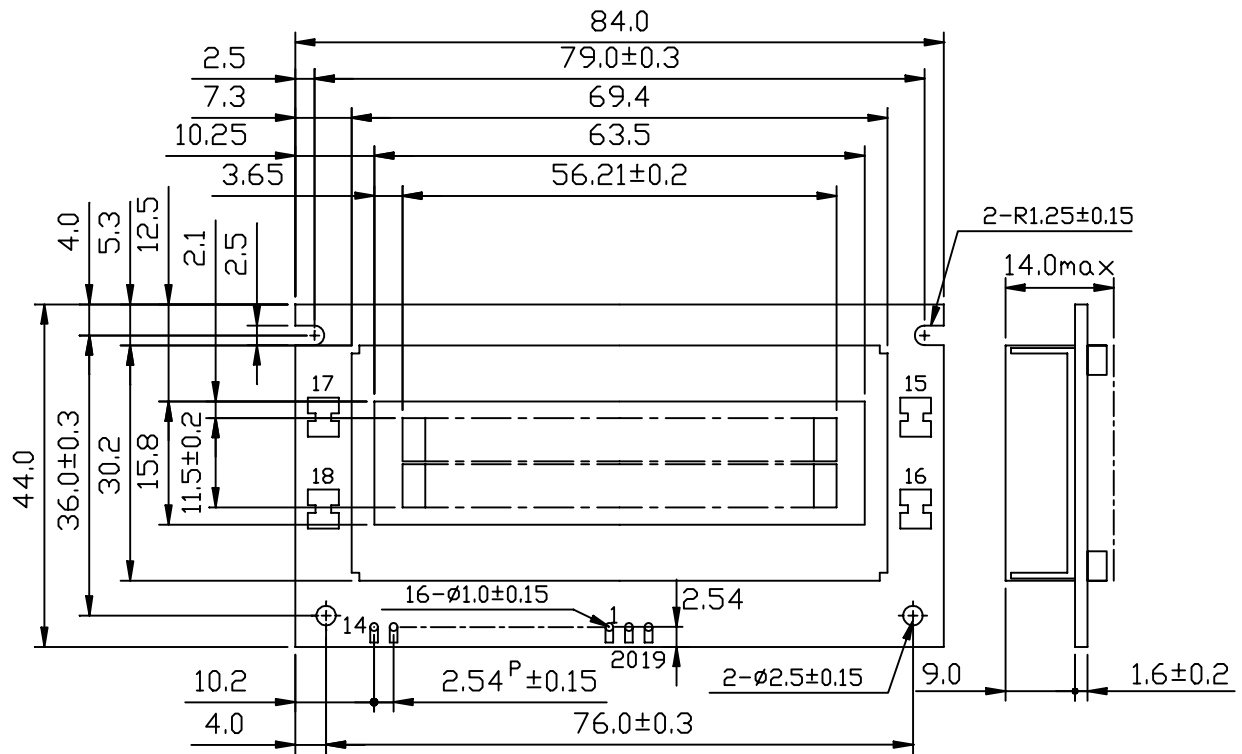
NOTE (1) : PLEASE REFER TO :

CUSTOMER ACCEPTANCE STANDARD SPECIFICATION : EU-002A

NOTE (2) : POLARIZER MODE : TRANSFLECTIVE

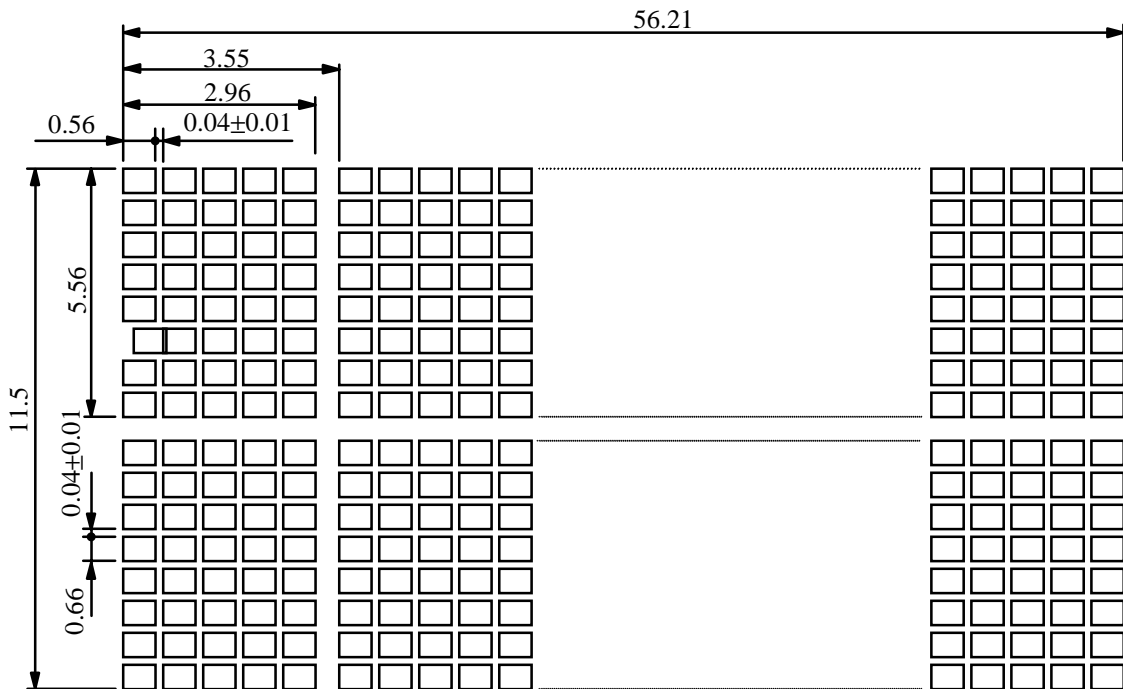
NOTE (3) : POLARIZER MODE : TRANSMISSIVE

6. OUTLINE DIMENSION



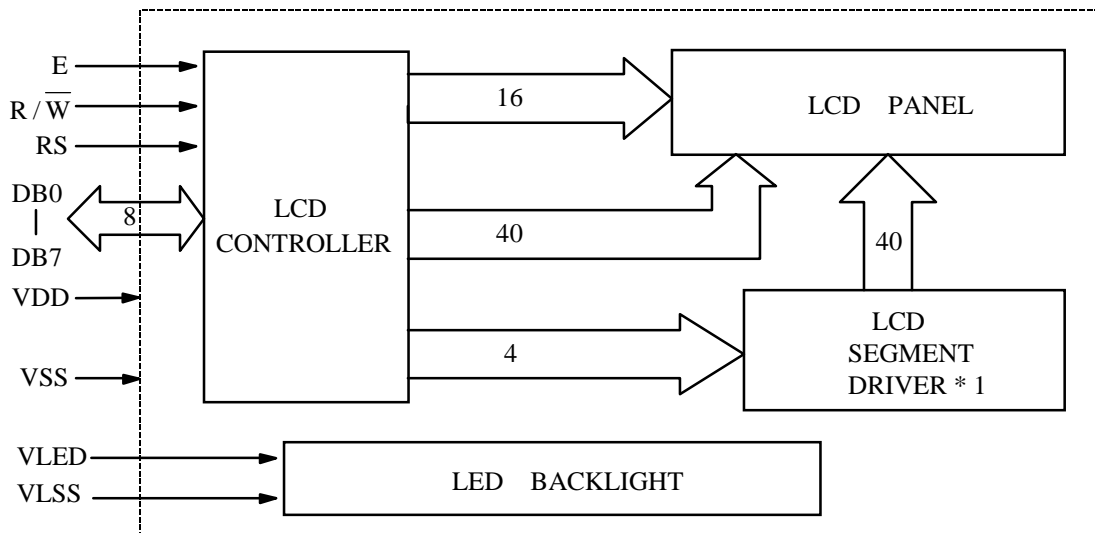
UNIT : mm
SCALE : NTS
NOT SPECIFIED TOLERANCE IS ±0.5mm

7. DETAIL DRAWING OF DOT MATRIX



UNIT : mm
SCALE : NTS
NOT SPECIFIED TOLERANCE IS ±0.1

8. BLOCK DIAGRAM

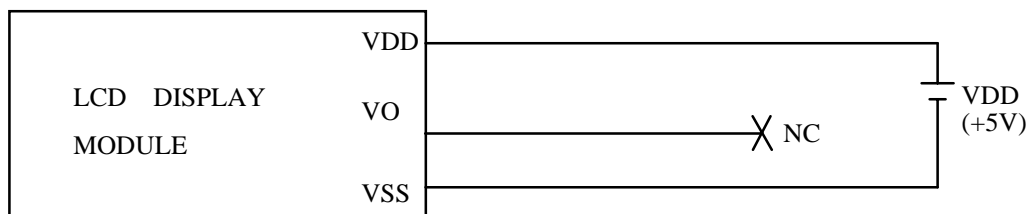


9. INTERFACE SIGNALS

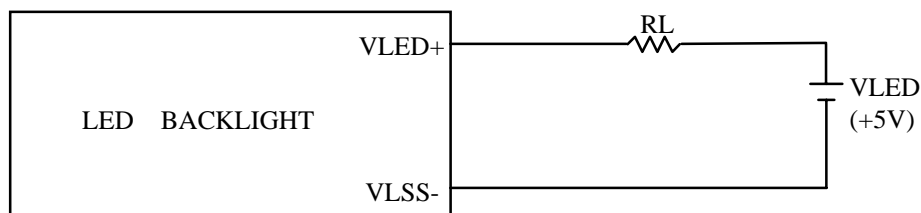
PIN NO.	SYMBOL	DESCRIPTION	FUNCTION
1	VSS	GROUND	0V (GND)
2	VDD	POWER SUPPLY FOR LOGIC CIRCUIT	+5V
3	VO	NO CONNECTOR	
4	RS	INSTRUCTION/DATA REGISTER SELECTION	RS = 0 : INSTRUCTION REGISTER RS = 1 : DATA REGISTER
5	R/ \bar{W}	READ/WRITE SELECTION	$\overline{R/W}$ = 0 : REGISTER WRITE $\overline{R/W}$ = 1 : REGISTER READ
6	E	ENABLE INPUT	
7	DB0	DATA INPUT/OUTPUT LINES	4 BIT/8BIT SELECTABLE 4 BIT : DB4 - DB7 8 BIT : DB0 - DB7
8	DB1		
9	DB2		
10	DB3		
11	DB4		
12	DB5		
13	DB6		
14	DB7		
15	VLSS	POWER SUPPLY FOR LED LED BACKLIGHT (CATHODE)	0V (GND)
16	VLED	POWER SUPPLY FOR LED LED BACKLIGHT (ANODE)	
17	NC	————	
18	NC	————	
19	VLSS	POWER SUPPLY FOR LED LED BACKLIGHT (CATHODE)	0V (GND)
20	VLED	POWER SUPPLY FOR LED LED BACKLIGHT (ANODE)	

10. POWER SUPPLY

10.1 POWER SUPPLY FOR LCD MODULE



10.2. POWER SUPPLY FOR LED BACK-LIGHT



RECOMMENDED RESISTOR RL :6~15Ω,1/4 WATT (CONTROLLED BY USER)
* THE BRIGHTNESS WOULD BE ALTERED SUBJECT TO DIFFERENT VALUES OF RL

11. DISPLAY DATA RAM ADDRESS

CHARACTER	1	2	3	4	5	6	7	8	9	10	11	12	13	14	15	16
LINE 1	80	81	82	83	84	85	86	87	88	89	8A	8B	8C	8D	8E	8F
LINE 2	C0	C1	C2	C3	C4	C5	C6	C7	C8	C9	CA	CB	CC	CD	CE	CF